

R LAZY B RANCH



GAINING PROFIT *For Cattlemen*



ANNUAL PRODUCTION SALE
FRIDAY, FEBRUARY 17, 2023
1 PM CT || HUB CITY LIVESTOCK, ABERDEEN, SD

75 YEARLING
CHAROLAIS BULLS SELL
SATISFACTION GUARANTEED

CALVING EASE || GROWTH || MILK || CARCASS VALUE

Welcome...

Once again, ranching continues to be an interesting adventure. Between breaking the drought with a year's worth of rain last spring, followed by a summer of no rain and then getting a winter's worth of snow in mid December – this past year has really kept us on our toes! As they say, if ranching was easy, everyone would be doing it.

As we continue to build on our genetics, we are excited to bring some new herd sires into the sale. Check out the EPDs, you can find what you are looking for in this year's bulls. Consistent, even tempered and growthy, just the kind you need in your herds. From calving ease for heifers to high performance bulls for your best cows, this year's offering of 70+ bulls has it all. You can view the videos of the bulls on DV Auction, or call us and come to the ranch to view them in person prior to the sale. We will again be live on DV Auction so you can attend the sale even if you can't make it to Hub City Livestock. Any bull bought sight unseen will be guaranteed to your liking, so you can bid with confidence. Please contact us if you would like additional pictures or videos of any of the bulls.

In challenging years like this, taking advantage of every opportunity to put extra pounds on your calves is just good business, we can help you put pounds on every calf. We like to say that our bulls are bred right, fed right and built to last. We back them with a full year warrantee so you can buy with confidence.

As always, we look forward to the coming year and wish everyone an easy calving season, lush grass and continued success. Remember, A Bad Day Ranching Beats A Good Day In An Office every time!

Sincerely,

Robert and Vickie Birkliid

TERMINAL SIRE INDEX (TSI)

The AICA Terminal Sire Index (TSI) is a formal method of combining Expected Progeny Differences (BWT, WWT, YWT, REA, HCW, MARB and FAT) – into one single value on which to base selection decisions. The TSI uses estimates of the genetic relationships between traits with an economic default value based on three year rolling USDA data.

The TSI represents a dollar index per terminal progeny produced for a bull in the AICA database, ranking them for profit potential. This dollar index is to be interpreted much like single trait EPD. For example, if Sire A's index is \$191.66 and Sire B's index is \$200.00, then we would expect Sire B's offspring to average \$8.34 more net return (\$200.00 minus \$191.66) than Sire A's offspring.

2023 CHAROLAIS BREED AVERAGE

CE	BW	WW	YW	M	MCE	TM
5.8	-0.3	58	105	23	5.5	52
SC	CW	REA	FAT	MARB	TSI	
0.9	22	0.71	0.010	0.11	248.25	

Please bring this catalog with you on sale day!

R LAZY B RANCH



Contact Information

R Lazy B Charolais – Robert Birkliid

5851 122nd Ave. SE, Nome, ND 58062
701-924-8876 (H) • 701-678-3528 (C)
Vickie Birkliid | 281-773-7646

Sale Date & Location	Friday, February 17, 2023 • 1:00 PM CT Hub City Livestock Auction, Aberdeen, S.D. Phone 605-225-3279
Auctioneer	Seth Weishaar 605-210-1124
Sale Day Phone	Robert's Cell 701-678-3528 Vickie's Cell 281-773-7646
Livestock Reps	Donnie Leddy, Cattle Business Weekly, 605-695-0113 Hadley Schotte, AICA, 785-562-6632 Kelly Kline, Tri-State Livestock News, 701-320-5817 Dan Piroutek, Tri-State Livestock News, 605-685-4556 Steve Hellwig, Hub City Livestock, 605-380-3905 Mark Hove, Hub City Livestock, 605-290-4896
Ration	A TMR diet of corn silage, ground hay, modified distillers and cracked corn is feed after weaning at a rate of 50 MgCal of energy and 13.5 % protein plus Hubbard new Blueprint mineral supplement. Formulated to gain 3.5 # per day and build a breeding animal that will last for years.
Feeding Arrangement	The bulls may be kept, at the ranch, after April 1, 2023, at the buyer's risk for \$2.00/day.
Additional Performance Information	Adj. 365, ADG, and scrotal measurements will be provided sale day. Ultrasound information available sale day.
Guarantee	Bulls will be guaranteed to your satisfaction and semen tested before delivery. If there is a problem, we will provide a replacement to use and credit at next year's sale.
Insurance	Insurance will be available at a reasonable rate for both life insurance & loss of use coverage from Martin-Trudeau Insurance on sale day.
Trucking	A \$100 discount per bull will be given if you take your bull home on sale day. Bulls not taken home on sale day will be trucked back to the ranch for later delivery.
Health	The cattle are on a full vaccination program and interstate and Canadian health papers will be provided at no cost.
Sale Terms	Cash or check payable sale day unless credit arrangements are made with Robert Birkliid before the sale.

Additional information, ultrasound & performance data can be found on the website.

www.rlazybranch.com

See page 5 for details on DVAuction.



A

A RLB FARGO FLAME 436E Polled
Reg. #:M898440

BD: 3/7/17	BW: 80	ADJ WW: 885	Ratio: 103
	YW: 1464	ADG: 3.62	

RBM FARGO Y111	SPARROWS FARGO 811U	WINN MANS LANZA 610S
HC RHINESTONE 5100	SPARROWS DELIGHT 74L	SPARROWS DELIGHT 74L
	LT EASY PRO 1158 PLD	HC JACK 2082
	KEYS CHARLES BRONSON 2U	KEYS CHARLES BRONSON 2U
RLB MS MAGGY 436B P	KEYS CHARLES BRONSON 189X	CARDINALS LADY D680P
RLB MISS MAGNUM 216Z	KEYS MAGNUM 44U	RLB MS UNLIMITED 808U

He was the high selling bull in our 2018 sale, to the Doll Ranch, and we have since bought possession back. He sires full bodied cattle that are born easy and do well in the feedlot. He is the sire of several frontend bulls in this sale, continuing his legacy. The Fargo influence is strong.

CE	0.4
BW	0.4
WW	67
YW	122
MILK	22
MCE	5.9
MTL	55
SC	0.6
TSI	260.88
CW	32
REA	0.93
FAT	0.043
MARB	0.10



B

B WCR MASTER CHIEF 037 P Polled
Reg. #:M939613

BD: 01/31/20	BW: 76	ADJ WW: 714	Ratio: 110
	YW: 1349	ADG: 3.97	

ELDER'S BLACKJACK 788B	GERRARD PASTOR 35Z	GERRARD PREACHER 31U
SVY STARSTRUCK 8X	GERRARD ROXANNE 18P	SVY AD INVINCIBLE P 748T
	SVY STARSTRUCK 559R	WCR PRIME CUT 764 PLD
	WCR SIR PRIME CUT 637 ET P	WCR MS DESIGN 201 P
WCR MS PRIME CUT 852 P	WCR MS KINGSBURY 684 P	WCR KINGSBURY 116 P
		WCR MS FIREWATER 4322 P

He was our choice from the Weink Charolais herd. You will like the muscle shape and feedlot performance. They have a bold rib shape, wide bodied look to them. We have him a heavy test as a yearling on some of our best young cows with great results. Semen available.

CE	10.3
BW	-2.60
WW	69
YW	128
MILK	28
MCE	11.2
MTL	62
SC	1.1
TSI	274.03
CW	43
REA	1.15
FAT	0.002
MARB	0.15



C

C LT JOURNEY 7657 PLD Polled
Reg. #:M897833

BD: 03/07/17	BW: 90	ADJ WW: 833	Ratio: 116
	YW: 1410	ADG: 4.09	

LT JOURNEY 5208 PLD	LT QUEST 2203 PLD	LT LONG DISTANCE 9001 PLD
LT MOLLY 3011 PLD	LT ASTA 4255 PLD	LT ASTA 4255 PLD
	OAKDALE DUKE 9003P	LT MOLLY 1224 PLD
	LT BLUEGRASS 4017 P	LT BRENDA 6120 PLD
LT GALA 4822 PLD	LT LEDGER 0332 P	LT BRENDA 6120 PLD
LK MISS WIND 220	LT GALA 4822 PLD	LT WYOMING WIND 4020 PLD
	LK PRIME GAL 408	

Continues to produce cattle with a very positive weaning and yearling growth and above average marbling.

CE	3.5
BW	0.2
WW	74
YW	146
MILK	17
MCE	0.6
MTL	54
SC	1.7
TSI	288.32
CW	28
REA	0.77
FAT	0.027
MARB	0.18



D

D LT PRIDE 0401 PLD Polled
Reg. #:M943564

BD: 04/06/20	BW: 77	ADJ WW: 787	Ratio: 104
	YW: 1313	ADG: 3.29	

LT TIAGA 4090 PLD	BHC TOP PRO 7025 P	LT EASY PRO 1158 PLD
LT BRENDA 8034 PLD	LT TIAGA 4090 PLD	BHC MS WATCHMAN 2053 P
	M6 FRESH AIR 8165 P ET	LT SILVER DISTANCE 5342P
LT BRENDA 8489 PLD ET	LT BRENDA 6120 PLD	LT BRENDA 6120 PLD
LT BRENDA 6120 PLD	THREE TREES WIND 0383 ET	SR LADY EASE 914 ET
	LT RIO BRAVO 3181 P	LT BRENDA'S EASE 3055PLD

We picked the Tiaga son from the LT herd for calving ease and maternal background. He worked great on first calf heifers. All were born unassisted and vigorous at birth. They are growing well in the feedlot. Small heads and smooth fronted consistently. Semen available.

CE	11.5
BW	-4.8
WW	44
YW	83
MILK	23
MCE	6.8
MTL	45
SC	0.7
TSI	233.77
CW	12
REA	0.63
FAT	0.039
MARB	0.22



E DC/CRJ TANK E108 P Polled
Reg. #: M905524

BD: 02/08/17	BW: 80	ADJ WW: 915	Ratio: 115	CE	12.8
	YW: 1606	ADG: 4.32		BW	-1.9
				WW	67
				YW	147
				MILK	39
				MCE	10.2
				MTL	73
				SC	0.6
				TSI	294.36
				CW	47
				REA	0.80
				FAT	-0.028
				MARB	0.05

BHD PERSEUS B65 P
 BHD ZEUS X3041
 BHD MS ZEN Z27
CRJ MS ZYLEN C1587
 SM ZYLEN A849 S
 BHD MS TRADEMARK Z38

JDJ TRUE MARK T39 P
 MD MS SILVERBOE J576
 BHD ZEN X270 P
 SM MS BOSQUE X0145 P
 CJC PHOENIX SON U3078
 SM MISS BAILEY T714
 CJC TRADEMARK H45
 BHD MS CURLIN X264

We used the Tank bull on some heifers with good results. You will like the growth they exhibit. Great calving ease along with stellar EPDs.



F LT PATRIOT 4004 PLD Polled
Reg. #: M852822

BD: 2/10/2014	BW: 86	ADJ WW: 886	Ratio: 111	CE	1.9
	YW: 1451	ADG: 3.53		BW	-0.4
				WW	66
				YW	125
				MILK	24
				MCE	2.9
				MTL	57
				SC	1.2
				TSI	262.83
				CW	33
				REA	0.54
				FAT	0.066
				MARB	0.14

LT LEDGER 0332 P
 LT BLUEGRASS 4017 P
 LT BRENDA 6120 PLD
LK MISS RIO 2119
 LK DISTANT RIO 900
 LK MISS SILVER T 059

LT ASSERTION 1277 P
 LT PEARL'S BREEZE 2236 P
 LT RIO BRAVO 3181 P
 LT BRENDA'S EASE 3055PLD
 LT SILVER DISTANCE 5342P
 LK MISS RIO 713
 LT SILVER DISTANCE 5342P
 LK MISS T 870

This sire has been good for our herd. Producing great marketable bulls and heifers that have turned into productive cows that have improved our herd. Watch for his pedigree in the cows. Proud to be a part owner.



G HTA UNDEFEATED 8115F Polled
Reg. #: M924864

BD: 02/18/18	BW:	ADJ WW:	Ratio:	CE	4.2
	YW:	ADG:		BW	0.9
				WW	60
				YW	111
				MILK	23
				MCE	9.2
				MTL	52
				SC	1.6
				TSI	251.79
				CW	30
				REA	0.83
				FAT	-0.004
				MARB	0.05

HTA ASTROID 603D
 HTA BRAVIA 855U
 HTA BRIDGET 704T

HTA SARA 447B
 C2 ZEPLIN 45Z
 HTA SARA 9107W

EATONS LEADER 2233 P
 HTA BRIDGET PLD 201M
 M6 GRID MAKER 104 PET
 HTA BRIDGET 577R
 HIGH BLUFF HANK 41R
 MERIT DENISE 7011T
 SVS NOBLEMAN 25N
 HTA SARA 903J

Continues to sire pounds heavy cattle that are born easy and show lots of muscle expression. They were very popular last year.



H HTA MISSLE 110H Polled
Reg. #: M954353

BD: 02/05/11	BW: N/A	ADJ WW: N/A	Ratio: N/A	CE	1.8
	YW: N/A	ADG: N/A		BW	1.2
				WW	53
				YW	102
				MILK	20
				MCE	4.7
				MTL	46
				SC	1.4
				TSI	247.65
				CW	19
				REA	0.91
				FAT	-0.025
				MARB	0.08

SHSH HIGH CLASS 43D
 SHSH MADONNA 21U
HTA BRIDGET 704T
 HTA BRIDGET 577R

WINN MANS LANZA 610S
 SPARROWS DURANGO 585P
 WINN MAN MERIT 036K
 SPARROWS SERENGETI 521N
 MNE MADONNA 7M
 WCR SIR TRADITION 066
 VCR MISS MAC IV 317
 SVS NOBLEMAN 25N
 HTA BRIDGET 325N

This is a new bull we bought from the HTA outfit in Canada mainly because of his mother and the long deep flanked look he exhibits. Nice heads, calves easy and extra length are all stamped in his offspring. We are looking forward to the ultrasound data on the calves as his Canadian epds' were outstanding for ribeye and marbling score. The maternal value of his daughters should be a long term asset.



I HTA CENTERFIRE 618 D Polled
Reg. #: M891528

BD: 01/10/16	BW: 94	ADJ WW: 782	Ratio: 100	CE	10.3
YW:	ADG:			BW	-1.8
LT BLUEGRASS 4017 P	LT ASSERTION 1277 P			VV	46
LT LEDGER 0332 P	LT PEARL'S BREEZE 2236 P			YW	115
LT BRENDA 6120 PLD	LT RIO BRAVO 3181 P			MILK	13
	LT BRENDA'S EASE 3055PLD			MCE	8.0
	P-3 PERFECT LAD 4-42D			MTL	36
DIM CREEK DIVIDEND 43M	DIM CREEK MARIE 43D			SC	1.5
HTA HOT STUFF (S) 6935	HTA WHITEHOT 105A			TSI	269.81
HTA HOT STUFF 803H	HTA HOT STUFF 609F			CW	17
				REA	0.37
Has continued to sire cattle that are born easy, do well in the feedlot and is a high marbling sire. Top 10% in the breed.				FAT	0.047
				MARB	0.25



J RBM FARGO Y111 Polled
Reg. #: EM809088

BD: 02/05/11	BW: 94	ADJ WW: 782	Ratio: 100	CE	7.5
YW: 1344	ADG: 3.81			BW	0.7
WINN MANS LANZA 610S	SPARROWS DURANGO 585P			WW	76
SPARROWS FARGO 811U	WINN MAN MERIT 036K			YW	148
SPARROWS DELIGHT 74L	SPARROWS ALLIANCE 513G			MILK	28
	RLTC MISS TRIM 74A			MCE	6.8
	LT UNLIMITED EASE 9108			MTL	67
LT EASY PRO 1158 PLD	LT LADY MACBETH 8413 ETP			SC	1.3
HC RHINESTONE 5100	JDJ JACK J258			TSI	281.59
HC JACK 2082	HC CADILLAC 8081			CW	47
				REA	0.98
They just keep getting the job done. The daughters have proven to be big calf raisers time and again. Semen continues to be sold worldwide and Fargo has left his mark on the Charolais breed. Owned by the LT and RBM ranches in South Dakota.				FAT	0.035
				MARB	-0.13



K LT RANSOM 8644 Polled
Reg. #: M914463

BD: 02/27/18	BW: 90	ADJ WW: 818	Ratio: 117	CE	7.7
YW: 1300	ADG: 3.24			BW	-1.1
LT QUEST 2203 PLD	LT LONG DISTANCE 9001 PLD			WW	60
LT JOURNEY 5208 PLD	LT ASTA 4255 PLD			YW	103
LT MOLLY 3011 PLD	OAKDALE DUKE 9003P			MILK	27
	LT MOLLY 1224 PLD			MCE	4.4
	LT BLUEGRASS 4017 P			MTL	57
LT BLUE VALUE 7903 ET	LT UNLIMITED MAID 7184 P			SC	1.5
LT SHEILA 337 PLD	LT WYOMING WIND 4020 PLD			TSI	250.79
LT MISS BREEZY 524	LK PRIME NAOMI 303			CW	16
				REA	0.75
Has developed into an easy calving maternal sire that we are keeping most heifers that he sires. He also excels in carcass traits and is in the top 7% of the breed for marbling.				FAT	-0.021
				MARB	0.27

Deep Roots, Dedication & Drive

Contact Dustin Puhmann for all your feed needs:
712-229-2258 dpuhmann@coopfe.com
WWW.COOPFE.COM
AGRONOMY ENERGY FEED GRAIN LUMBER

REFERENCE SIRE

R LAZY B RANCH

010 RLB TRACTOR 010K

Polled
Reg. #: M974628

BD: 2/26/22 BW: 86 AWW: 762 Ratio: 112
YW: _____ ADG: _____

BHD PERSEUS B65 P
DC/CRJ TANK E108 P
CRJ MS ZYLEN C1587

BHD ZEUS X3041
BHD MS ZEN Z27
SM ZYLEN A849 S
BHD MS TRADEMARK Z38

LT TIOGA 4090 PLD
RLB MS CHARLETTE 010H
RLB MISS SHAR COMM 890F

BHC TOP PRO 7025 P
LT BRENDA 8034 PLD
LT COMMISSIONER 5232 PLD
RLB MISS SHAR 219Z

I like this bull a lot. Deep ribbed and long, sired by the performance sire Tank. Big Scrotal.

CE	6.1
BW	-1.3
WW	68
YW	130
MILK	33
MCE	3.3
MTL	67
SC	0.7
TSI	272.57
CW	34
REA	0.72
FAT	-0.04
MARB	0.11



R LAZY B RANCH

020 RLB RIDER PRIDE 020K

Polled
Reg. #: M974671

BD: 3/21/22 BW: 78 AWW: 743 Ratio: 109
YW: _____ ADG: _____

LT TIOGA 4090 PLD
LT PRIDE 0401 PLD
LT BRENDA 8489 PLD ET

BHC TOP PRO 7025 P
LT BRENDA 8034 PLD
M6 FRESH AIR 8165 P ET
LT BRENDA 6120 PLD

LT RANSOM 8644
RLB MS PATTI 020H
RLB PATRICIA 605D

LT JOURNEY 5208 PLD
LT SHEILA 337 PLD
LT PATRIOT 4004 PLD
RLB REWARDING 320A

Low BW, moderate framed and extra thick. Smooth shouldered, calving ease bull.

CE	9.7
BW	-3.2
WW	60
YW	106
MILK	26
MCE	5.0
MTL	55
SC	1.1
TSI	251.25
CW	20
REA	0.66
FAT	0.024
MARB	0.20

R LAZY B RANCH

022 RLB PRAIRE PRIDE 022K

Polled
Reg. #: M974937

BD: 05/1/22 BW: 72 AWW: 713 Ratio: 105
YW: _____ ADG: _____

LT TIOGA 4090 PLD
LT PRIDE 0401 PLD
LT BRENDA 8489 PLD ET

BHC TOP PRO 7025 P
LT BRENDA 8034 PLD
M6 FRESH AIR 8165 P ET
LT BRENDA 6120 PLD

RBM FARGO Y111
RLB MISS BLAZE 022H
RLB MISS BLAZE 785E

SPARROWS FARGO 811U
HC RHINESTONE 5100
EC MAJOR IMPACT 107 PLD
RLB MISS BLAZE 948

Nice low BW bull born in May but has plenty of growth and size for the summer breeding season. Could be used on heifers.

CE	9.0
BW	-2.6
WW	55
YW	102
MILK	25
MCE	7.7
MTL	53
SC	0.9
TSI	246.35
CW	22
REA	0.71
FAT	0.029
MARB	0.10

R LAZY B RANCH

026 RLB PRIDE 026K

Polled
Reg. #: M974697

BD: 4/7/22 BW: 78 AWW: 690 Ratio: 101
YW: _____ ADG: _____

LT TIOGA 4090 PLD
LT PRIDE 0401 PLD
LT BRENDA 8489 PLD ET

BHC TOP PRO 7025 P
LT BRENDA 8034 PLD
M6 FRESH AIR 8165 P ET
LT BRENDA 6120 PLD

RBM FARGO Y111
RLB MS ABBY 026H
RLB MISS ABBY 716E

SPARROWS FARGO 811U
HC RHINESTONE 5100
LT LANDMARK 5052 PLD
RLB MISS ABBY 503C PLD TW

Another low BW calving ease prospect with great EPDs.

CE	11.1
BW	-3.2
WW	56
YW	110
MILK	27
MCE	5.6
MTL	55
SC	0.9
TSI	254.89
CW	22
REA	0.75
FAT	0.036
MARB	0.09

R LAZY B RANCH

032 RLB PRIDE ROCK 032K

Polled
Reg. #: M974632

BD: 3/4/22 BW: 92 AWW: 783 Ratio: 115
YW: _____ ADG: _____

LT TIOGA 4090 PLD
LT PRIDE 0401 PLD
LT BRENDA 8489 PLD ET

BHC TOP PRO 7025 P
LT BRENDA 8034 PLD
M6 FRESH AIR 8165 P ET
LT BRENDA 6120 PLD

RBM FARGO Y111
RLB MISS TINA 032H
RLB MS TINA 628D

SPARROWS FARGO 811U
HC RHINESTONE 5100
LT PATRIOT 4004 PLD
RLB MS TINA MARIE 352A

Big barreled growth bull sired by our calving ease specialist, LT Pride. Great EPDs.

CE	2.6
BW	-0.1
WW	71
YW	123
MILK	27
MCE	1.8
MTL	63
SC	1.0
TSI	259.64
CW	26
REA	0.72
FAT	0.039
MARB	0.09

R LAZY B RANCH

038 RLB SIR PRIDE 038K

Polled
Reg. #: M974647

BD: 3/14/22 BW: 82 AWW: 722 Ratio: 106
YW: _____ ADG: _____

LT TIOGA 4090 PLD
LT PRIDE 0401 PLD
LT BRENDA 8489 PLD ET

BHC TOP PRO 7025 P
LT BRENDA 8034 PLD
M6 FRESH AIR 8165 P ET
LT BRENDA 6120 PLD

HTA UNDEFEATED 8115F
RLB MS TOASTIE 038H
RLB MS TOASTIE 509C PLD

HTA ASTROID 603D
HTA SARA 447B
LT LEDGER 0332 P
RLB MS TOASTIE 335A

Another Pride bull that is long and thick.

CE	8.1
BW	-1.8
WW	56
YW	102
MILK	25
MCE	7.3
MTL	53
SC	1.0
TSI	245.38
CW	20
REA	0.73
FAT	0.027
MARB	0.13

R LAZY B RANCH

040 RLB FULL TANK 040K

Polled
Reg. #: M974627

BD: 2/26/22 BW: 90 AWW: 690 Ratio: 101
YW: _____ ADG: _____

BHD PERSEUS B65 P
DC/CRJ TANK E108 P
CRJ MS ZYLEN C1587

BHD ZEUS X3041
BHD MS ZEN Z27
SM ZYLEN A849 S
BHD MS TRADEMARK Z38

LT RANSOM 8644
RLB MS KUDO 040H
RLB MISS KUDO 313A

LT JOURNEY 5208 PLD
LT SHEILA 337 PLD
LT LEDGER 0332 P
RLB MISS KUDO 152Y PLD

A very growthy Tank son from an extra nice cow family.

CE	5.4
BW	0.0
WW	61
YW	123
MILK	33
MCE	3.8
MTL	64
SC	1.0
TSI	268.61
CW	34
REA	0.79
FAT	-0.013
MARB	0.14

047 RLB LAND PRIDE 047K Polled
Reg. #: M974625

BD: 2/24/22 BW: 78 AWW: 742 Ratio: 109
YW: _____ ADG: _____

LT TIOGA 4090 PLD BHC TOP PRO 7025 P
LT BREND A 8034 PLD
LT PRIDE 0401 PLD M6 FRESH AIR 8165 P ET
LT BREND A 8489 PLD ET LT BREND A 6120 PLD
LT RANSOM 8644 LT JOURNEY 5208 PLD
LT SHEILA 337 PLD
RLB MISS SILK 047H LT PATRIOT 4004 PLD
RLB MS SILK 952E RLB MS SILK 622S

Moderate framed, deep ribbed and thick. Large scrotal and darker pigment skin.

CE	9.0
BW	-2.9
WW	57
YW	97
MILK	26
MCE	5.8
MTL	55
SC	0.9
TSI	241.87
CW	18
REA	0.61
FAT	0.024
MARB	0.21



068 RLB TANKER 068K Polled
Reg. #: M974557

BD: 2/23/22 BW: 76 AWW: 703 Ratio: 103
YW: _____ ADG: _____

BHD PERSEUS B65 P BHD ZEUS X3041
BHD MS ZEN Z27
DC/CRJ TANK E108 P SM ZYLEN A849 S
CRJ MS ZYLEN C1587 BHD MS TRADEMARK Z38
LT RANSOM 8644 LT JOURNEY 5208 PLD
LT SHEILA 337 PLD
RLB MS PATRICIA 068H LT PATRIOT 4004 PLD
RLB MS PATRICIA 710E RLB MS KUDDLER 531C PLD

My favorite Tank son. Great performance, muscle shape and impeccable EPD line. Take another look.

CE	10.9
BW	-2.3
WW	63
YW	124
MILK	34
MCE	7.8
MTL	65
SC	0.9
TSI	270.22
CW	34
REA	0.75
FAT	-0.012
MARB	0.10



069 RLB MR PRIDE 069K Polled
Reg. #: M974558

BD: 2/24/22 BW: 82 AWW: 703 Ratio: 103
YW: _____ ADG: _____

LT TIOGA 4090 PLD BHC TOP PRO 7025 P
LT BREND A 8034 PLD
LT PRIDE 0401 PLD M6 FRESH AIR 8165 P ET
LT BREND A 8489 PLD ET LT BREND A 6120 PLD
LT JOURNEY 7657 PLD LT JOURNEY 5208 PLD
LT GALA 4822 PLD
RLB MS BLUE 069H LT BLUE RAY 3316 TW PLD
RLB MISS TIMER 314A

Nice bigger framed Pride son. Long and growthy.

CE	8.1
BW	-2.0
WW	59
YW	103
MILK	23
MCE	6.1
MTL	52
SC	1.0
TSI	246.36
CW	17
REA	0.66
FAT	0.032
MARB	0.18

071 RLB MR CHARLIE 071K Polled
Reg. #: M974556

BD: 2/21/22 BW: 70 AWW: 681 Ratio: 100
YW: _____ ADG: _____

LT TIOGA 4090 PLD BHC TOP PRO 7025 P
LT BREND A 8034 PLD
LT PRIDE 0401 PLD M6 FRESH AIR 8165 P ET
LT BREND A 8489 PLD ET LT BREND A 6120 PLD
LT JOURNEY 7657 PLD LT JOURNEY 5208 PLD
LT GALA 4822 PLD
RLB MS CHARLENNE 071H EC MAJOR IMPACT 107 PLD
RLB MISS CHUCKLES 546C PLD RLB MS CHUCKLES 237Z

Super low BW calving ease bull that could be bred to first calf heifers of any breed.

CE	11.9
BW	-4.6
WW	54
YW	102
MILK	23
MCE	7.9
MTL	50
SC	1.0
TSI	250.89
CW	16
REA	0.68
FAT	0.027
MARB	0.18

View the Auction Live! Bid Online... you're ringside right at your desk!

Buying online is as easy as 1, 2, 3...

1. Create an account at www.DVAuction.com under the "Register" tab
2. Apply for bidding approval by clicking on the "details" tab at least 24 hours prior to the auction — a DV representative will notify you once you have been approved.
3. Tune in for the sale to make your purchases!

High Speed internet is required for successful bidding-be sure to check the lag-time monitor in the top left corner to ensure real-time broadcasts.

Proxy-bidding — if you can't make time to watch the sale, register a proxy bid and let our system represent your bid while you're away. Look for the "proxy bid" tab on the auction listing, and fill in your maximum bids. We'll handle the rest!

For General Questions Please contact Our Office:

402-316-5460 or support@dvauction.com



DVAuction
Broadcasting Real-Time Auctions

R LAZY B RANCH

083 RLB SIR STRUTT 083K

Polled
Reg. #: M974633

BD: 3/4/22 BW: 80 AWW: 755 Ratio: 111
YW: _____ ADG: _____

LT TIOGA 4090 PLD
LT PRIDE 0401 PLD
LT BRENDA 8489 PLD ET
LT COMMISSIONER 5232 PLD
RLB MS SNOWWHITE 083H
RLB SNOW WHITE 570C PLD

BHC TOP PRO 7025 P
LT BRENDA 8034 PLD
M6 FRESH AIR 8165 P ET
LT BRENDA 6120 PLD
LT LEDGER 0332 P
LT BALLET 9219 POLLED
RBM NO DOUBT Z34
RLB MS SNOWY 626S TW

Here's a high indexing Pride bull from a performance bred first calf heifer. High carcass value to boot.

CE	8.1
BW	-1.8
WW	66
YW	113
MILK	23
MCE	4.2
MTL	56
SC	0.9
TSI	255.28
CW	23
REA	0.65
FAT	0.036
MARB	0.24



R LAZY B RANCH
083

R LAZY B RANCH

111 RLB SIR FARGO 111K

Polled
Reg. #: M974655

BD: 3/16/22 BW: 80 AWW: 718 Ratio: 108
YW: _____ ADG: _____

RBM FARGO Y111
RLB FARGO FLAME 436E
RLB MS MAGGY 436B P
LT LONG DISTANCE 9001 PLD
RLB MISS MCCOY 111Y PLD
RLB MS MCCOY 930

SPARROWS FARGO 811U
HC RHINESTONE 5100
KEYS CHARLES BRONSON 189X
RLB MISS MAGNUM 216Z
LT SILVER DISTANCE 5342P
LT BELLE 7026 P
RC MCCOY 2177 PLD
RLB MS CUTTER 407 P

Very well-made Flame son. Low BW and good performance. A full brother started last year's sale and was selected by Fred Hoffman.

CE	5.8
BW	-1.6
WW	58
YW	101
MILK	23
MCE	4.2
MTL	52
SC	0.4
TSI	243.88
CW	21
REA	0.72
FAT	0.022
MARB	0.15

R LAZY B RANCH

282 RLB SIR FARGO 282K

Polled
Reg. #: M974645

BD: 3/13/22 BW: 86 AWW: 688 Ratio: 95
YW: _____ ADG: _____

RBM FARGO Y111
RLB FARGO FLAME 436E
RLB MS MAGGY 436B P
LT LONG DISTANCE 9001 PLD
RLB MISS DISTANCE282Z
RLB MISS TASHA 059

SPARROWS FARGO 811U
HC RHINESTONE 5100
KEYS CHARLES BRONSON 189X
RLB MISS MAGNUM 216Z
LT SILVER DISTANCE 5342P
LT BELLE 7026 P
KEYS TITAN 62T
RLB MISS TASHA 734T

Well balanced Flame son. Check him out. The Flame sons have a very consistent look and shape.

CE	5.4
BW	-1.3
WW	60
YW	103
MILK	18
MCE	4.8
MTL	48
SC	0.3
TSI	244.51
CW	19
REA	0.83
FAT	0.013
MARB	0.06

R LAZY B RANCH

288 RLB MAC ATTACK 288K

Polled
Reg. #: EM977809

BD: 3/25/22 BW: 104 AWW: 722 Ratio: 100
YW: _____ ADG: _____

TCR MAC A40
TCR MAC 9F
MISS TCR COWGIRL D37
LT BLUE VALUE 7903 ET
RLB MISS BELLE 406B P
RLB MS CONNIE 245Z

TCR MAC 14T
MISS TCR CAPRICE W36
TCR COWBOY V3
MISS TCR CAPRICE X52
LT BLUEGRASS 4017 P
LT UNLIMITED MAID 7184 P
KEYS MAGNUM 44U
RLB MS CONVERSE 514

Long and stretchy ET son of the Mac bull and our 406 cow. She has produced many powerful offspring over the years.

CE	5.6
BW	-0.6
WW	63
YW	115
MILK	25
MCE	7.3
MTL	56
SC	0.8
TSI	259.54
CW	28
REA	0.86
FAT	-0.010
MARB	0.15

R LAZY B RANCH

352 RLB TRAVELER 352K

Polled
Reg. #: M974709

BD: 4/17/22 BW: 84 AWW: 725 Ratio: 97
YW: _____ ADG: _____

LT JOURNEY 5208 PLD
LT JOURNEY 7657 PLD
LT GALA 4822 PLD
EC ABOUT TIME 5027 PLD
RLB MS TINA MARIE 352A
RLB MISS TINA 752T

LT QUEST 2203 PLD
LT MOLLY 3011 PLD
LT LEDGER 0332 P
LK MISS WIND 220
EC NO DOUBT 2022 P
EC TRENDY LADY 5027 P
RC MCCOY 2177 PLD
KCC MISS UNLIMITED 582E

He's a late April son of our Journey bull. His mother has done a great job for us.

CE	6.3
BW	-0.7
WW	63
YW	118
MILK	21
MCE	3.3
MTL	53
SC	1.1
TSI	258.47
CW	25
REA	0.71
FAT	0.022
MARB	0.08

Blueprint



Tyler Melroe, M.S.
605-237-8431

Blueprint mineral program is formulated to meet the higher nutrient needs of today's cattle. This program promotes rapid growth, maximum reproductive performance and animal health. The Blueprint Seedstock Grower supplement used by R Lazy B Ranch, in addition to the benefits of the Blueprint program, is also formulated to optimize hoof health and foot quality in these growing cattle.

R LAZY B RANCH

406 RLB TRAVELER 406K TW Polled Reg. #: M974714

BD: 4/25/22 BW: 84 AWW: 742 Ratio: 100
 YW: _____ ADG: _____

LT JOURNEY 5208 PLD
LT JOURNEY 7657 PLD
 LT GALA 4822 PLD

LT BLUE VALUE 7903 ET
RLB MISS BELLE 406B P
 RLB MS CONNIE 245Z

LT QUEST 2203 PLD
 LT MOLLY 3011 PLD
 LT LEDGER 0332 P
 LK MISS WIND 220

LT BLUEGRASS 4017 P
 LT UNLIMITED MAID 7184 P
 KEYS MAGNUM 44U
 RLB MS CONVERSE 514

CE	-1.9
BW	2.7
WW	72
YW	131
MILK	21
MCE	1.7
MTL	58
SC	1.6
TSI	272.17
CW	29
REA	0.89
FAT	0.010
MARB	0.22

This late April calf started out as a twin and has been coming on strong. This cow keeps doing it. Be sure to look him up. He is young but good.

R LAZY B RANCH

447 RLB PATRIOT STAR 447K Polled Reg. #: M974673

BD: 3/22/22 BW: 92 AWW: 711 Ratio: 98
 YW: _____ ADG: _____

LT LEDGER 0332 P
LT PATRIOT 4004 PLD
 LK MISS RIO 2119

KEYS CHARLES BRONSON 189X
RLB MS SPAGHETTI 447B P
 RLB MISS SPAGHETTI 213Z

LT BLUEGRASS 4017 P
 LT BRENDA 6120 PLD
 LK DISTANT RIO 900
 LK MISS SILVER T 059

KEYS CHARLES BRONSON 2U
 CARDINALS LADY D680P
 JLS PERFORMER 766W PLD
 RLB MS SPAGHETTI 618S

CE	3.0
BW	0.4
WW	62
YW	123
MILK	24
MCE	4.8
MTL	54
SC	0.9
TSI	264.25
CW	33
REA	0.64
FAT	0.031
MARB	0.12

Here is a Patriot son from a very consistent cow bloodline. Several of her sons have gone to work in well-respected cattlemen's herds.



R LAZY B RANCH

450 RLB MR MILLSTONE 450K Polled Reg. #: M974690

BD: 4/3/22 BW: 80 AWW: 692 Ratio: 92
 YW: _____ ADG: _____

WC MILESTONE 5223 P
WC MILESTONE 8224 P
 WC LACE 3420 P ET

RBM FARGO Y111
RLB MISS MASTER 450B P
 RLB MS MASTER 838U

WC BENELLI 2134 P ET
 WC LADY BLUE 0506 P
 WC BIG BEN 9036 P
 LT LACE MAKER 6085 P

SPARROWS FARGO 811U
 HC RHINESTONE 5100
 RC MASTER 276 PLD TW
 RLB MS MARTHA 225M P

CE	10.2
BW	-2.6
WW	51
YW	101
MILK	19
MCE	7.8
MTL	44
SC	1.1
TSI	248.54
CW	21
REA	0.74
FAT	0.008
MARB	0.11

A real stud, masculine looking low BW bull with great length on a moderate frame.

R LAZY B RANCH

419 RLB TRAVEL AGENT 419K Polled Reg. #: M974669

BD: 3/20/22 BW: 78 AWW: 656 Ratio: 98
 YW: _____ ADG: _____

LT JOURNEY 5208 PLD
LT JOURNEY 7657 PLD
 LT GALA 4822 PLD

RBM FARGO Y111
RLB MISS TUKO 419B P
 RLB MISS TUKO 716T TW

LT QUEST 2203 PLD
 LT MOLLY 3011 PLD
 LT LEDGER 0332 P
 LK MISS WIND 220

SPARROWS FARGO 811U
 HC RHINESTONE 5100
 RC MCCOY 2177 PLD
 RLB MS PRIMECUT 201M P

CE	8.1
BW	-1.4
WW	64
YW	125
MILK	17
MCE	5.9
MTL	49
SC	1.5
TSI	268.31
CW	30
REA	0.72
FAT	0.032
MARB	0.12

Low BW stretchy bull with impressive feedlot gain and growth EPDs.



R LAZY B RANCH

449 RLB MILLSTONE 449K Polled Reg. #: M974650

BD: 3/15/22 BW: 90 AWW: 744 Ratio: 99
 YW: _____ ADG: _____

WC MILESTONE 5223 P
WC MILESTONE 8224 P
 WC LACE 3420 P ET

RBM FARGO Y111
RLB MISS SNOWY 449B P
 RLB MS SNOWY 626S TW

WC BENELLI 2134 P ET
 WC LADY BLUE 0506 P
 WC BIG BEN 9036 P
 LT LACE MAKER 6085 P

SPARROWS FARGO 811U
 HC RHINESTONE 5100
 RC LIMITLESS 136 PLD
 RLB MS HAYMAKER 228M P

CE	7.0
BW	-0.5
WW	57
YW	114
MILK	24
MCE	5.8
MTL	53
SC	1.1
TSI	259.26
CW	26
REA	0.83
FAT	0.004
MARB	0.11

Smooth patterned Milestone son. Again, from a great cow family.

R LAZY B RANCH

472 RLB ROAD TRIP 472K Polled Reg. #: M974631

BD: 2/28/22 BW: 94 AWW: 684 Ratio: 94
 YW: _____ ADG: _____

LT JOURNEY 5208 PLD
LT JOURNEY 7657 PLD
 LT GALA 4822 PLD

EC ABOUT TIME 5027 PLD
RLB MS SHEBA 472B P
 RLB MS SHEBA 627S

LT QUEST 2203 PLD
 LT MOLLY 3011 PLD
 LT LEDGER 0332 P
 LK MISS WIND 220

EC NO DOUBT 2022 P
 EC TRENDY LADY 5027 P
 RC LIMITLESS 136 PLD
 RLB MS ANGIE 912J PLD

CE	4.7
BW	0.3
WW	66
YW	126
MILK	19
MCE	4.0
MTL	52
SC	1.2
TSI	265.89
CW	30
REA	0.72
FAT	0.021
MARB	0.08

Really nice bull, super quiet, attractive head with impressive EPDs.

R LAZY B RANCH

477 RLB CENTERFIELD 477K Polled Reg. #: M974654

BD: 3/16/22 BW: 106 AWW: 754 Ratio: 104
 YW: _____ ADG: _____

LT LEDGER 0332 P
HTA CENTERFIRE 618D
 HTA HOT STUFF (S) 693S

WCR HEAVY DUTY 237 P
RLB MS SYBIL 477B P
 RLB MS SYBIL 118Y PLD

LT BLUEGRASS 4017 P
 LT BRENDA 6120 PLD
 DIM CREEK DIVIDEND 43M
 HTA HOT STUFF 803H

EATONS VISIONARY 2044 P
 WCR MS PRINCE 071 P
 SCR SIR GRID MAKER 6032
 RLB MS SYBIL 651S

CE	2.2
BW	1.7
VV	58
YW	118
MILK	26
MCE	3.4
MTL	55
SC	1.3
TSI	262.35
CW	23
REA	0.72
FAT	0.028
MARB	0.17

The only Centerfire bull we have, and he is deep ribbed and thick.



MARTIN-TRUDEAU
INSURANCE

1531 W Elm · P.O. Box 487
 Mitchell, SD 57301
 Ph. 605-996-3106 or 800-450-3106
 Fax 605-996-7644
 Cell 605-770-9986
www.martin-trudeauinsurance.com

Katie Williams
Agent
kwilliams@juffer.com

R LAZY B RANCH

489 RLB ROADKING 489K Polled Reg. #: M974678

BD: 3/24/22 BW: 102 AWW: 833 Ratio: 111
 YW: _____ ADG: _____

LT JOURNEY 5208 PLD
LT JOURNEY 7657 PLD
 LT GALA 4822 PLD

RBM FARGO Y111
RLB MISS 489B
 RLB MISS ULTRA 826U

LT QUEST 2203 PLD
 LT MOLLY 3011 PLD
 LT LEDGER 0332 P
 LK MISS WIND 220

SPARROWS FARGO 811U
 HC RHINESTONE 5100
 KC UNLIMITED MAC 552P ET
 RLB MS SONYA 644S PLD

CE	0.4
BW	2.3
VV	75
YW	138
MILK	22
MCE	1.2
MTL	60
SC	1.4
TSI	273.55
CW	29
REA	0.73
FAT	0.021
MARB	0.07

Extra-long, extra performance. Smooth shouldered for calving ease and quiet.

R LAZY B RANCH

511B RLB BLUE PATRIOT 511 BK TW Polled Reg. #: M974643

BD: 3/12/22 BW: 60 AWW: 583 Ratio: 100
 YW: _____ ADG: _____

LT LEDGER 0332 P
LT PATRIOT 4004 PLD
 LK MISS RIO 2119

LT BLUE RAY 3316 TW PLD
RLB MS BLUE BELL 511C PLD
 RLB MS MASTERS 310A

LT BLUEGRASS 4017 P
 LT BRENDA 6120 PLD
 LK DISTANT RIO 900
 LK MISS SILVER T 059

LT BLUE VALUE 7903 ET
 LT BELLE 7026 P
 LT LEDGER 0332 P
 RLB MS MASTER 132Y TW

CE	8.2
BW	-2.1
VV	69
YW	125
MILK	23
MCE	7.7
MTL	58
SC	1.4
TSI	265.10
CW	32
REA	0.70
FAT	0.051
MARB	0.17

Big ribbed and smoothly made. These twin bothers started out super small and I grafted one onto a heifer that lost her calf. The 511 cow has always done a good job and these Patriot bulls will do the same for you.

R LAZY B RANCH

511 RLB PATRIOTIC 511K TW Polled Reg. #: M974644

BD: 3/12/22 BW: 70 AWW: 680 Ratio: 100
 YW: _____ ADG: _____

LT LEDGER 0332 P
LT PATRIOT 4004 PLD
 LK MISS RIO 2119

LT BLUE RAY 3316 TW PLD
RLB MS BLUE BELL 511C PLD
 RLB MS MASTERS 310A

LT BLUEGRASS 4017 P
 LT BRENDA 6120 PLD
 LK DISTANT RIO 900
 LK MISS SILVER T 059

LT BLUE VALUE 7903 ET
 LT BELLE 7026 P
 LT LEDGER 0332 P
 RLB MS MASTER 132Y TW

CE	3.8
BW	0.1
VV	69
YW	126
MILK	23
MCE	6.3
MTL	58
SC	1.4
TSI	264.00
CW	32
REA	0.70
FAT	0.051
MARB	0.17

Big ribbed and smoothly made. These twin bothers started out super small and I grafted one onto a heifer that lost her calf. The 511 cow has always done a good job and these Patriot bulls will do the same for you.

R LAZY B RANCH

513 RLB WRANGLER 513K Polled Reg. #: M974691

BD: 4/4/22 BW: 88 AWW: 709 Ratio: 98
 YW: _____ ADG: _____

RBM FARGO Y111
RLB FARGO FLAME 436E
 RLB MS MAGGY 436B P

WR WRANGLER W601
RLB MS WRANGLER 513C PLD
 RLB MISS SWEETY 311A

SPARROWS FARGO 811U
 HC RHINESTONE 5100
 KEYS CHARLES BRONSON 189X
 RLB MISS MAGNUM 216Z

CMF 192 WRANGLER 256
 WR MISS PRINCESS T629
 LT LEDGER 0332 P
 RLB MS SWEETY 154Y PLD

CE	7.0
BW	-1.7
VV	65
YW	111
MILK	20
MCE	7.7
MTL	52
SC	0.8
TSI	250.90
CW	28
REA	0.83
FAT	0.034
MARB	0.12

I can't say enough good things about this guy. Soggy, deep flank with a pretty head combined with a world class pedigree.



R LAZY B RANCH

531 RLB FLAME 531K

Polled
Reg. #: M974707

BD: 4/17/22 BW: 86 AWW: 750 Ratio: 104
YW: _____ ADG: _____

RBM FARGO Y111
RLB FARGO FLAME 436E
RLB MS MAGGY 436B P

EC MAJOR IMPACT 107 PLD
RLB MS KUDDLER 531C PLD
RLB MISS KUDDLER 222 P

SPARROWS FARGO 811U
HC RHINESTONE 5100
KEYS CHARLES BRONSON 189X
RLB MISS MAGNUM 216Z
EC SILVER DISTANCE 740 PLD
EC DYNASTY 107 PLD
EC NO DOUBT 2022 P
RLB MS KUDROW 066

CE	4.6
BW	-1.1
VW	61
YW	109
MILK	26
MCE	6.4
MTL	56
SC	0.8
TSI	249.73
CW	26
REA	0.85
FAT	0.021
MARB	0.06

Great performance from a young April bull. This is a strong cow who never disappoints.



R LAZY B RANCH

534 RLB SIR PATRIOT 534K

Polled
Reg. #: M974660

BD: 3/18/22 BW: 90 AWW: 742 Ratio: 102
YW: _____ ADG: _____

LT LEDGER 0332 P
LT PATRIOT 4004 PLD
LK MISS RIO 2119

EC ABOUT TIME 5027 PLD
RLB MISS TIMELESS 534C PLD
RLB MISS KEY WIND 906

LT BLUEGRASS 4017 P
LT BRENDA 6120 PLD
LK DISTANT RIO 900
LK MISS SILVER T 059
EC NO DOUBT 2022 P
EC TRENDY LADY 5027 P
THREE TREES WIND 0383 ET
RLB MISS KEY 751T

CE	5.5
BW	-0.7
VW	69
YW	123
MILK	20
MCE	5.9
MTL	54
SC	1.0
TSI	259.75
CW	28
REA	0.65
FAT	0.039
MARB	0.06

A Patriot son with a bold spring of rib and round shape to his rear quarter. Clean, calving ease look to his front end.

R LAZY B RANCH

550 RLB TRAVELER 550K

Polled
Reg. #: M974677

BD: 3/23/22 BW: 92 AWW: 768 Ratio: 103
YW: _____ ADG: _____

LT JOURNEY 5208 PLD
LT JOURNEY 7657 PLD
LT GALA 4822 PLD

RBM FARGO Y111
RLB MS CONNIE 550C PLD
RLB MS CONNIE 245Z

LT QUEST 2203 PLD
LT MOLLY 3011 PLD
LT LEDGER 0332 P
LK MISS WIND 220
SPARROWS FARGO 811U
HC RHINESTONE 5100
KEYS MAGNUM 44U
RLB MS CONVERSE 514

CE	3.3
BW	0.7
VW	74
YW	144
MILK	21
MCE	1.7
MTL	58
SC	1.6
TSI	283.92
CW	37
REA	0.97
FAT	0.016
MARB	0.07

Big bodied performance bull.

R LAZY B RANCH

570 RLB WHITE FLAME 570K

Polled
Reg. #: M974696

BD: 4/6/22 BW: 98 AWW: 821 Ratio: 113
YW: _____ ADG: _____

RBM FARGO Y111
RLB FARGO FLAME 436E
RLB MS MAGGY 436B P

RBM NO DOUBT 234
RLB SNOW WHITE 570C PLD
RLB MS SNOWY 626S TW

SPARROWS FARGO 811U
HC RHINESTONE 5100
KEYS CHARLES BRONSON 189X
RLB MISS MAGNUM 216Z
EC NO DOUBT 2022 P
RBM BLEND 829
RC LIMITLESS 136 PLD
RLB MS HAYMAKER 228M P

CE	0.9
BW	1.3
VW	73
YW	127
MILK	30
MCE	3.3
MTL	66
SC	0.7
TSI	263.51
CW	34
REA	0.78
FAT	0.029
MARB	0.15

Deep ribbed and thick butted high indexing bull.

R LAZY B RANCH

582 RLB BLUE FLAME 582K

Polled
Reg. #: M974642

BD: 3/12/22 BW: 98 AWW: 774 Ratio: 107
YW: _____ ADG: _____

RBM FARGO Y111
RLB FARGO FLAME 436E
RLB MS MAGGY 436B P

WCR SIR KINGSBURY 345 P
RLB MS MYSTIC 582C PLD
RLB MS MYSTIC 160Y PLD

SPARROWS FARGO 811U
HC RHINESTONE 5100
KEYS CHARLES BRONSON 189X
RLB MISS MAGNUM 216Z
WCR KINGSBURY 116 P
WCR MS PAUL 1171 P
RAILE 2250 U054
RLB MS MAKER 973

CE	-0.6
BW	0.7
VW	68
YW	121
MILK	25
MCE	1.6
MTL	59
SC	0.5
TSI	258.82
CW	23
REA	0.74
FAT	0.033
MARB	0.11

Bigger framed bull with great growth numbers and EPDs.



R LAZY B RANCH
605

RLB UNIFIED 605K

Polled
Reg. #: M974653

BD: 3/16/22 BW: 94 AWW: 722 Ratio: 96
YW: _____ ADG: _____

HTA ASTROID 603D HTA BRAVIA 855U
HTA UNDEFEATED 8115F HTA BRIDGET 704T
HTA SARA 447B C2 ZEPLIN 45Z
HTA SARA 9107W

LT PATRIOT 4004 PLD LT LEDGER 0332 P
RLB PATRICIA 605D LK MISS RIO 2119
RLB REWARDING 320A JLS PERFORMER 766W PLD
RLB MISS REWARD 749T

He is an extra long son of the Canadian bull Undeclared. Checkout his EPDs too.

CE	3.0
BW	0.7
WW	64
YW	124
MILK	24
MCE	4.0
MTL	55
SC	1.5
TSI	263.69
CW	35
REA	0.74
FAT	0.018
MARB	0.08

R LAZY B RANCH
611

RLB CHAMPION 611K

Polled
Reg. #: M974668

BD: 3/20/22 BW: 92 AWW: 715 Ratio: 99
YW: _____ ADG: _____

HTA ASTROID 603D HTA BRAVIA 855U
HTA UNDEFEATED 8115F HTA BRIDGET 704T
HTA SARA 447B C2 ZEPLIN 45Z
HTA SARA 9107W

LT PATRIOT 4004 PLD LT LEDGER 0332 P
RLB MISS PATTY 611D LK MISS RIO 2119
RLB MISS FARGO 321A TW RBM FARGO Y111
RLB MISS MAKER 022

Another Undeclared son you are going to want coming to your Ranch. Don't pass him by!

CE	4.6
BW	0.3
WW	60
YW	111
MILK	21
MCE	7.6
MTL	51
SC	1.3
TSI	250.71
CW	30
REA	0.74
FAT	0.020
MARB	0.07

R LAZY B RANCH
615

RLB JOURNEYMAN 615K

Polled
Reg. #: M974717

BD: 4/30/22 BW: 92 AWW: 844 Ratio: 117
YW: _____ ADG: _____

LT JOURNEY 5208 PLD LT QUEST 2203 PLD
LT JOURNEY 7657 PLD LT MOLLY 3011 PLD
LT GALA 4822 PLD LT LEDGER 0332 P
LK MISS WIND 220

LT PATRIOT 4004 PLD LT LEDGER 0332 P
RLB MISS ROYALE 615D LK MISS RIO 2119
RLB ISS ROYALE 302A EC ROYALTIES 7027 PLD
RLB MS MCCOY923

Pretty nice, high indexing bull here. Born the last day of April but will be plenty mature by breeding season. Take an extra look at his numbers.

CE	2.8
BW	0.4
WW	77
YW	140
MILK	23
MCE	2.5
MTL	61
SC	1.3
TSI	279.42
CW	30
REA	0.81
FAT	0.030
MARB	0.15

R LAZY B RANCH
620

RLB UNDER DOG 620K

Polled
Reg. #: M974674

BD: 3/22/22 BW: 104 AWW: 784 Ratio: 105
YW: _____ ADG: _____

HTA ASTROID 603D HTA BRAVIA 855U
HTA UNDEFEATED 8115F HTA BRIDGET 704T
HTA SARA 447B C2 ZEPLIN 45Z
HTA SARA 9107W

LT PATRIOT 4004 PLD LT LEDGER 0332 P
RLB MISS MARIA 620D LK MISS RIO 2119
RLB MS MARIA 339A RBM FARGO Y111
RLB MS MARIA 924

An extra long Undeclared son. Great performance and EPDs.

CE	-1.0
BW	2.9
WW	66
YW	124
MILK	27
MCE	4.5
MTL	60
SC	1.4
TSI	261.07
CW	31
REA	0.71
FAT	0.019
MARB	0.07

R LAZY B RANCH
609

RLB WESTERN 609K

Polled
Reg. #: M974692

BD: 4/4/22 BW: 86 AWW: 809 Ratio: 108
YW: _____ ADG: _____

LT JOURNEY 5208 PLD LT QUEST 2203 PLD
LT JOURNEY 7657 PLD LT MOLLY 3011 PLD
LT GALA 4822 PLD LT LEDGER 0332 P
LK MISS WIND 220

LT BLUE RAY 3316 TW PLD LT BLUE VALUE 7903 ET
RLB MISS BLUE WEST 609D LT BELLE 7026 P
RLB MS WEST WIND 422B P RBM FARGO Y111
RLB MISS KEY WIND 906

Very attractive bull with everything going for him. Low BW, high WW, great feedlot growth and EPDs.

CE	6.9
BW	-0.4
WW	73
YW	125
MILK	22
MCE	6.1
MTL	59
SC	1.3
TSI	264.36
CW	25
REA	0.79
FAT	0.020
MARB	0.16

R LAZY B RANCH
613

RLB FARGO FLAME 613K

Polled
Reg. #: M974666

BD: 3/20/22 BW: 110 AWW: 760 Ratio: 102
YW: _____ ADG: _____

RBM FARGO Y111 SPARROWS FARGO 811U
RLB FARGO FLAME 436E HC RHINESTONE 5100
RLB MS MAGGY 436B P KEYS CHARLES BRONSON 189X
RLB MISS MAGNUM 216Z

LT PATRIOT 4004 PLD LT LEDGER 0332 P
RLB MISS PATRIOT 613D LK MISS RIO 2119
RLB MS TOASTIE 335A KEYS CHARLES BRONSON 189X
RLB MISS TOASTIE 0 106 PLD

He's a powerful, moderate framed bull. Small head and smooth shoulders will give him great calving ease on mature cows.

CE	-4.4
BW	3.1
WW	68
YW	123
MILK	25
MCE	2.9
MTL	59
SC	0.8
TSI	258.59
CW	31
REA	0.77
FAT	0.036
MARB	0.10



Our new Granddaughter Anna Marie Claeys and her parents
Joe and Katelyn Claeys

R LAZY B RANCH
628

RLB FARGO NORTH 628K Polled
Reg. #: M974672

BD: 3/21/22 BW: 102 AWW: 796 Ratio: 106
YW: _____ ADG: _____

SPARROWS FARGO 811U	WINN MANS LANZA 610S
RBM FARGO Y111	SPARROWS DELIGHT 74L
HC RHINESTONE 5100	LT EASY PRO 1158 PLD
	HC JACK 2082
LT PATRIOT 4004 PLD	LT LEDGER 0332 P
RLB MS TINA 628D	LK MISS RIO 2119
RLB MS TINA MARIE 352A	EC ABOUT TIME 5027 PLD
	RLB MISS TINA 752T

Sired by Fargo and has plenty of length and stretch. Check out his growth EPDs.

CE	1.2
BW	2.3
WW	76
YW	139
MILK	29
MCE	2.7
MTL	67
SC	1.2
TSI	269.34
CW	40
REA	0.82
FAT	0.039
MARB	-0.04

R LAZY B RANCH
643

RLB MR FARGO 643K Polled
Reg. #: M974698

BD: 4/8/22 BW: 86 AWW: 685 Ratio: 95
YW: _____ ADG: _____

RBM FARGO Y111	SPARROWS FARGO 811U
RLB FARGO FLAME 436E	HC RHINESTONE 5100
RLB MS MAGGY 436B P	KEYS CHARLES BRONSON 189X
	RLB MISS MAGNUM 216Z
EC MAJOR IMPACT 107 PLD	EC SILVER DISTANCE 740 PLD
RLB MS MASTERS 643D	EC DYNASTY 107 PLD
RLB MISS MASTER 450B P	RBM FARGO Y111
	RLB MS MASTER 838U

A moderate framed Flame son with great muscle shape.

CE	3.8
BW	-0.6
WW	60
YW	109
MILK	23
MCE	8.0
MTL	52
SC	0.8
TSI	248.46
CW	27
REA	0.76
FAT	0.030
MARB	0.04

R LAZY B RANCH
659

RLB MR TRUCKER 659K Polled
Reg. #: M974679

BD: 3/26/22 BW: 94 AWW: 763 Ratio: 102
YW: _____ ADG: _____

LT JOURNEY 5208 PLD	LT QUEST 2203 PLD
LT JOURNEY 7657 PLD	LT MOLLY 3011 PLD
LT GALA 4822 PLD	LT LEDGER 0332 P
	LK MISS WIND 220
RBM FARGO Y111	SPARROWS FARGO 811U
RLB MISS SHAR 659D	HC RHINESTONE 5100
RLB MISS SHAR 219Z	JLS PERFORMER 766W PLD
	RLB MS SHARLENE 604S

Very nice Journey son. His dam is one of my best Fargo daughters. Good gene's here.

CE	4.1
BW	0.7
WW	71
YW	134
MILK	20
MCE	3.4
MTL	56
SC	1.5
TSI	272.71
CW	31
REA	0.69
FAT	0.023
MARB	0.11

R LAZY B RANCH
669

RLB MR FARGO 669K Polled
Reg. #: M974710

BD: 4/18/22 BW: 86 AWW: 684 Ratio: 91
YW: _____ ADG: _____

RBM FARGO Y111	SPARROWS FARGO 811U
RLB FARGO FLAME 436E	HC RHINESTONE 5100
RLB MS MAGGY 436B P	KEYS CHARLES BRONSON 189X
	RLB MISS MAGNUM 216Z
WCR SIR KINGSBURY 345 P	WCR KINGSBURY 116 P
RLB MS LAZY 669D	WCR MS PAUL 1171 P
RLB MS LAZY 205AZ TW	JLS PERFORMER 766W PLD
	RLB MISS IMPRESSED 758

Another moderate framed Flame son. Low BW and heavily muscled.

CE	2.9
BW	-1.1
WW	61
YW	109
MILK	18
MCE	3.0
MTL	48
SC	0.6
TSI	250.67
CW	26
REA	0.74
FAT	0.030
MARB	0.11

R LAZY B RANCH
642

RLB MILESTONE 642K Polled
Reg. #: M974712

BD: 4/21/22 BW: 86 AWW: 661 Ratio: 99
YW: _____ ADG: _____

WC MILESTONE 5223 P	WC BENELLI 2134 P ET
WC MILESTONE 8224 P	WC LADY BLUE 0506 P
WC LACE 3420 P ET	WC BIG BEN 9036 P
	LT LACE MAKER 6085 P
RBM FARGO Y111	SPARROWS FARGO 811U
RLB MS MARIA 642D	HC RHINESTONE 5100
RLB MISS MARIA 210Z	KEYS CHARLES BRONSON 189X
	RLB MS MARIA 924

A pretty nice Milestone son. Quality genetics never disappoint.

CE	9.4
BW	-1.7
WW	51
YW	104
MILK	23
MCE	8.0
MTL	49
SC	0.9
TSI	251.87
CW	21
REA	0.83
FAT	0.002
MARB	0.10

R LAZY B RANCH
657

RLB MR UNDEFEATED 657K Polled
Reg. #: M974684

BD: 3/28/22 BW: 86 AWW: 689 Ratio: 92
YW: _____ ADG: _____

HTA ASTROID 603D	HTA BRAVIA 855U
HTA UNDEFEATED 8115F	HTA BRIDGET 704T
HTA SARA 447B	C2 ZEPLIN 45Z
	HTA SARA 9107W
RBM FARGO Y111	SPARROWS FARGO 811U
RLB MYSTERY MISS 657D	HC RHINESTONE 5100
RLB MISS TONYA 724T	RC MCCOY 2177 PLD
	RLB MS BLAZE H817 TW

An Undeclared son that is coming on really strong in the feedlot. A full brother was our leadoff bull 2 years ago.

CE	6.4
BW	-0.3
WW	55
YW	109
MILK	22
MCE	7.8
MTL	49
SC	1.4
TSI	251.89
CW	31
REA	0.83
FAT	0.011
MARB	0.03

R LAZY B RANCH
668

RLB RANGER 668K Horned
Reg. #: M974648

BD: 3/14/22 BW: 108 AWW: 775 Ratio: 104
YW: _____ ADG: _____

CCC WC RESOURCE 417 P	LT RUSHMORE 8060 PLD
WDZ FRONT RANGE 602 P	WC CCC BLUE GIRL 1528 P
WDZ SKITTLES 341 P	SFC WDZ WIND 024
	WDZ KF SKITTLES 125 P ET
EC MAJOR IMPACT 107 PLD	EC SILVER DISTANCE 740 PLD
RLB MS SYBIL 668D	EC DYNASTY 107 PLD
RLB MS SYBIL 477B P	WCR HEAVY DUTY 237 P
	RLB MS SYBIL 118Y PLD

Front Range at it's best. Bigger framed bull with a clean front end and extra length, made for crossbreeding your black or red cows.

CE	-3.3
BW	3.2
WW	68
YW	114
MILK	30
MCE	3.5
MTL	64
SC	0.8
TSI	247.38
CW	30
REA	1.06
FAT	0.027
MARB	0.02

R LAZY B RANCH
675

RLB MAPQUEST 675K Polled
Reg. #: M974662

BD: 3/18/22 BW: 94 AWW: 766 Ratio: 115
YW: _____ ADG: _____

LT JOURNEY 5208 PLD	LT QUEST 2203 PLD
LT JOURNEY 7657 PLD	LT MOLLY 3011 PLD
LT GALA 4822 PLD	LT LEDGER 0332 P
	LK MISS WIND 220
WCR SIR KINGSBURY 345 P	WCR KINGSBURY 116 P
RLB MISS TUKO 675D	WCR MS PAUL 1171 P
RLB MISS TUKO 061 TW	KEYS MAGNUM 44U
	RLB MISS TUKO 715T TW

Long, thick muscled, bigger framed performance bull.

CE	-0.6
BW	0.6
WW	83
YW	141
MILK	17
MCE	-3.6
MTL	58
SC	1.5
TSI	276.47
CW	28
REA	0.76
FAT	0.028
MARB	0.14



678 RLB SIR FLAME 678K Polled
Reg. #: M974641

BD: 3/12/22	BW: 86	AWW: 741	Ratio: 102	CE	5.1
	YW: _____	ADG: _____		BW	-0.7
				VW	64
				YW	116
RLB FARGO FLAME 436E				MILK	23
RLB MS MAGGY 436B P				MCE	6.7
				MTL	55
				SC	0.6
RLB MISS SILK 678D				TSI	254.15
RLB MS SILK 622S				CW	31
				REA	0.74
				FAT	0.031
				MARB	0.06

Well balanced Flame son from the Silk cow family. Outstanding quality here. This cow family is known for longevity with great feet and udders.

691 RLB SIR PATRIOT 691K Polled
Reg. #: M974664

BD: 3/19/22	BW: 96	AWW: 744	Ratio: 99	CE	3.5
	YW: _____	ADG: _____		BW	0.1
				VW	65
				YW	121
LT PATRIOT 4004 PLD				MILK	25
LK MISS RIO 2119				MCE	4.2
				MTL	57
				SC	0.9
RLB MISS SNOWY 691D				TSI	257.87
RLB MS SNOWY 626S TW				CW	33
				REA	0.48
				FAT	0.044
				MARB	0.11

Bigger framed Patriot you are going to like.



699 RLB FIREBALL 699K Polled
Reg. #: M974630

BD: 2/27/22	BW: 100	AWW: 809	Ratio: 108	CE	0.7
	YW: _____	ADG: _____		BW	1.7
				VW	67
				YW	116
RLB FARGO FLAME 436E				MILK	26
RLB MS MAGGY 436B P				MCE	6.2
				MTL	60
				SC	0.7
RLB MS MARIA 699D				TSI	254.30
RLB MS MARIA 408B P				CW	25
				REA	0.81
				FAT	0.035
				MARB	0.16

Your first impression will be big, wide and attractive. What's not to like?



701 RLB ROCKET 701K Polled
Reg. #: M974718

BD: 5/3/22	BW: 94	AWW: 712	Ratio: 100	CE	1.2
	YW: _____	ADG: _____		BW	1.0
				VW	58
				YW	109
HTA MISSLE 110H				MILK	23
HTA BRIDGET 704T				MCE	4.8
				MTL	51
				SC	1.3
RLB MS PATRIOTIC 701E				TSI	252.02
RLB MISS CHUCKLES 546C PLD				CW	21
				REA	0.76
				FAT	0.006
				MARB	0.11

He is an early May bull that will be a great addition to any herd. He fits in with the other bulls a month older than him.





LAZY B RANCH
710 RLB FLAMER 710K

Polled
Reg. #: M974683

BD: 3/28/22 BW: 92 AWW: 777 Ratio: 104
YW: _____ ADG: _____

RBM FARGO Y111 SPARROWS FARGO 811U
RLB FARGO FLAME 436E HC RHINESTONE 5100
RLB MS MAGGY 436B P KEYS CHARLES BRONSON 189X
RLB MS PATRICIA 710E LT LEDGER 0332 P
RLB MS KUDDLES 531C PLD EC MAJOR IMPACT 107 PLD
RLB MISS KUDDLERS 222 P

CE	1.1
BW	0.1
VVW	66
YW	119
MILK	26
MCE	3.6
MTL	59
SC	0.8
TSI	256.65
CW	30
REA	0.79
FAT	0.036
MARB	0.08

This bull could go to work anywhere. Quality and performance to get the job done.

LAZY B RANCH
715 RLB BOSSMAN 715K

Polled
Reg. #: M974670

BD: 3/20/22 BW: 86 AWW: 828 Ratio: 111
YW: _____ ADG: _____

ELDER'S BLACKJACK 788B GERRARD PASTOR 35Z
WCR MASTER CHIEF 037 P SVY STARSTRUCK 8X
WCR MS PRIME CUT 852 P WCR SIR PRIME CUT 637 ET P
WCR MS KINGSBURY 684 P
RBM FARGO Y111 SPARROWS FARGO 811U
RLB MISS LASS 715E TW HC RHINESTONE 5100
RLB MS LEDGERS LASS 405B P LT LEDGER 0332 P
RLB MISS KANSAS 242Z

CE	8.6
BW	-1.1
VVW	75
YW	137
MILK	27
MCE	9.4
MTL	65
SC	1.2
TSI	276.94
CW	40
REA	1.01
FAT	0.020
MARB	0.09

This Master Chief son was an eye catcher all summer. Great depth and spring of rib.



LAZY B RANCH
716 RLB MR TRAVELER 716K

Polled
Reg. #: M974702

BD: 4/14/22 BW: 90 AWW: 770 Ratio: 103
YW: _____ ADG: _____

LT JOURNEY 5208 PLD LT QUEST 2203 PLD
LT JOURNEY 7657 PLD LT MOLLY 3011 PLD
LT GALA 4822 PLD LT LEDGER 0332 P
LT LANDMARK 5052 PLD LT RUSHMORE 8060 PLD
RLB MISS ABBY 716E LT JENNY 3028 PLD
RLB MISS ABBY 503C PLD TW LT LEDGER 0332 P
RLB MISS ABBY 359A

CE	7.2
BW	-0.9
VVW	65
YW	131
MILK	25
MCE	0.1
MTL	57
SC	1.2
TSI	275.01
CW	23
REA	0.77
FAT	0.028
MARB	0.11

Another high EPD, well-made Journey son.

LAZY B RANCH
735 RLB MASTER SWEET 735K

Polled
Reg. #: M974659

BD: 3/18/22 BW: 88 AWW: 736 Ratio: 103
YW: _____ ADG: _____

ELDER'S BLACKJACK 788B GERRARD PASTOR 35Z
WCR MASTER CHIEF 037 P SVY STARSTRUCK 8X
WCR MS PRIME CUT 852 P WCR SIR PRIME CUT 637 ET P
WCR MS KINGSBURY 684 P
LT PATRIOT 4004 PLD LT LEDGER 0332 P
RLB MISS SWEETY 735E LK MISS RIO 2119
RLB MS SWEETY 464B P RBM FARGO Y111
RLB SWEETY 616S

CE	7.3
BW	-1.2
VVW	67
YW	122
MILK	27
MCE	8.9
MTL	60
SC	1.1
TSI	263.12
CW	38
REA	0.89
FAT	0.024
MARB	0.10

Master Chief and Patriot work well together on this thick made bull.

LAZY B RANCH
742 RLB FARGO STAR 742K

Polled
Reg. #: M974661

BD: 3/18/22 BW: 98 AWW: 680 Ratio: 94
YW: _____ ADG: _____

SPARROWS FARGO 811U WINN MANS LANZA 610S
RBM FARGO Y111 SPARROWS DELIGHT 74L
HC RHINESTONE 5100 LT EASY PRO 1158 PLD
HC JACK 2082
LT LEDGER 0332 P LT BLUEGRASS 4017 P
RLB MISS SYBIL 742E LT BRENDA 6120 PLD
RLB MS SYBIL 118Y PLD SCR SIR GRID MAKER 6032
RLB MS SYBIL 651S

CE	4.1
BW	1.6
VVW	65
YW	128
MILK	26
MCE	5.1
MTL	59
SC	1.3
TSI	267.08
CW	40
REA	0.95
FAT	0.039
MARB	0.07

A long framed Fargo son.

Chappell Feedlot
PO Box 691 • Chappell, NE 6919
308-874-2297
TOM WILLIAMS
Williamstom@centurylink.net
Cell: 308-874-4193

R LAZY B RANCH

753 RLB MASTERCRAFT 753K

Polled
Reg. #: M974651

BD: 3/15/22 BW: 94 AWW: 775 Ratio: 104
YW: _____ ADG: _____

ELDER'S BLACKJACK 788B
WCR MASTER CHIEF 037 P
WCR MS PRIME CUT 852 P

GERRARD PASTOR 35Z
SVY STARSTRUCK 8X
WCR SIR PRIME CUT 637 ET P
WCR MS KINGSBURY 684 P

LT PATRIOT 4004 PLD
RLB MISS SILK 753E
RLB MS SILK 622S

LT LEDGER 0332 P
LK MISS RIO 2119
RC LIMITLESS 136 PLD
RLB MS CATHY 119L PLD

CE	4.7
BW	-0.4
VVW	67
YW	123
MILK	29
MCE	7.1
MTL	63
SC	1.0
TSI	263.51
CW	37
REA	0.76
FAT	0.019
MARB	0.15

This Master Chief son is boldly sprung and attractive to boot. Going back to Patriot and the Silk cow family gives him a lot of quality.



R LAZY B RANCH

769 RLB RANGE MASTER 769K

Polled
Reg. #: M974658

BD: 3/18/22 BW: 94 AWW: 809 Ratio: 108
YW: _____ ADG: _____

ELDER'S BLACKJACK 788B
WCR MASTER CHIEF 037 P
WCR MS PRIME CUT 852 P

GERRARD PASTOR 35Z
SVY STARSTRUCK 8X
WCR SIR PRIME CUT 637 ET P
WCR MS KINGSBURY 684 P

LT COMMISSIONER 5232 PLD
RLB MS SHAR 769E
RLB MISS SHAR 219Z

LT LEDGER 0332 P
LT BALLET 9219 POLLED
JLS PERFORMER 766W PLD
RLB MS SHARLENE 604S

CE	5.6
BW	0.0
VVW	78
YW	138
MILK	22
MCE	6.0
MTL	61
SC	1.2
TSI	278.99
CW	40
REA	0.95
FAT	0.013
MARB	0.19

Top performing Master Chief son. Don't let this one get away. He will sire very impressive feeder cattle.



R LAZY B RANCH

803 RLB MR MILESTONE 803K

Polled
Reg. #: M974685

BD: 3/29/22 BW: 90 AWW: 736 Ratio: 98
YW: _____ ADG: _____

WC MILESTONE 5223 P
WC MILESTONE 8224 P
WC LACE 3420 P ET

WC BENELLI 2134 P ET
WC LADY BLUE 0506 P
WC BIG BEN 9036 P
LT LACE MAKER 6085 P

LT LANDMARK 5052 PLD
RLB MISS PRISS 803F TW
RLB MISS PRISS 654D

LT RUSHMORE 8060 PLD
LT JENNY 3028 PLD
RBM FARGO Y111
RLB MISS PRISSEY 133Y PLD

CE	7.6
BW	-1.0
VVW	53
YW	102
MILK	25
MCE	2.0
MTL	51
SC	0.8
TSI	249.15
CW	16
REA	0.89
FAT	-0.002
MARB	0.09

Again, the Milestone pedigree adds great quality.

R LAZY B RANCH

810 RLB RUGGED 810K

Polled
Reg. #: M974639

BD: 3/11/22 BW: 94 AWW: 761 Ratio: 107
YW: _____ ADG: _____

SHSH HIGH CLASS 43D
HTA MISSLE 110H
HTA BRIDGET 704T

WINN MANS LANZA 610S
SHSH MADONNA 21U
M6 GRID MAKER 104 PET
HTA BRIDGET 577R

RBM FARGO Y111
RLB MISS FARGO BELLE 810F
RLB MS BLUE BELL 511C PLD

SPARROWS FARGO 811U
HC RHINESTONE 5100
LT BLUE RAY 3316 TW PLD
RLB MS MASTERS 310A

CE	2.2
BW	1.9
VVW	69
YW	124
MILK	25
MCE	5.8
MTL	59
SC	1.5
TSI	262.47
CW	29
REA	0.92
FAT	0.005
MARB	0.06

Long and very potent sire that shows early maturity and performance. Super foot structure on the Missile sire line.

R LAZY B RANCH

824 RLB MINUTEMAN 824K

Polled
Reg. #: M974663

BD: 3/19/22 BW: 90 AWW: 663 Ratio: 93
YW: _____ ADG: _____

SHSH HIGH CLASS 43D
HTA MISSLE 110H
HTA BRIDGET 704T

WINN MANS LANZA 610S
SHSH MADONNA 21U
M6 GRID MAKER 104 PET
HTA BRIDGET 577R

LT PATRIOT 4004 PLD
RLB MS PATRIOT 824F
RLB MS WRANGLER 513C PLD

LT LEDGER 0332 P
LK MISS RIO 2119
WR WRANGLER W601
RLB MISS SWEETY 311A

CE	4.6
BW	-0.4
VVW	57
YW	104
MILK	19
MCE	5.3
MTL	48
SC	1.2
TSI	247.46
CW	24
REA	0.77
FAT	0.010
MARB	0.11

He's moderate framed and long. I like his small head and overall length.

R LAZY B RANCH

830 RLB MISTER MISSLE 830K

Polled
Reg. #: M974676

BD: 3/23/22 BW: 90 AWW: 738 Ratio: 104
YW: _____ ADG: _____

SHSH HIGH CLASS 43D
HTA MISSLE 110H
HTA BRIDGET 704T

WINN MANS LANZA 610S
SHSH MADONNA 21U
M6 GRID MAKER 104 PET
HTA BRIDGET 577R

LT PATRIOT 4004 PLD
RLB MISS PATINA 830F
RLB MISS TINA 121Y PLD

LT LEDGER 0332 P
LK MISS RIO 2119
SCR SIR GRID MAKER 6032
RLB MS TINA 746T

CE	3.6
BW	0.0
VVW	61
YW	111
MILK	25
MCE	4.5
MTL	56
SC	1.2
TSI	253.53
CW	24
REA	0.78
FAT	0.000
MARB	0.11

Good topline, smooth shouldered and balanced growth numbers.

R LAZY B RANCH

831 RLB ASTRONAUT 831K

Polled
Reg. #: M974699

BD: 4/9/22 BW: 84 AWW: 773 Ratio: 109
YW: _____ ADG: _____

SHSH HIGH CLASS 43D
HTA MISSLE 110H
HTA BRIDGET 704T

WINN MANS LANZA 610S
SHSH MADONNA 21U
M6 GRID MAKER 104 PET
HTA BRIDGET 577R

RBM FARGO Y111
RLB MISS K 831F
RLB MISS KUDO 313A

SPARROWS FARGO 811U
HC RHINESTONE 5100
LT LEDGER 0332 P
RLB MISS KUDO 152Y PLD

Same as the last bull, these half brothers will sire consistent feeder cattle.

CE	7.1
BW	-0.8
WW	64
YW	118
MILK	26
MCE	6.3
MTL	58
SC	1.4
TSI	260.08
CW	28
REA	0.89
FAT	0.003
MARB	0.06

R LAZY B RANCH

8322 JS GO PRIDE 8322K

Polled
Reg. #: M974705

BD: 4/6/22 BW: 80 AWW: 737 Ratio: 100
YW: _____ ADG: _____

LT TIIGA 4090 PLD
LT PRIDE 0401 PLD
LT BRENDA 8489 PLD ET

BHC TOP PRO 7025 P
LT BRENDA 8034 PLD
M6 FRESH AIR 8165 P ET
LT BRENDA 6120 PLD

LT PATRIOT 4004 PLD
JS GO THE DISTANCE 8322
RLB DISTANCE MAKER 108Y PLD

LT LEDGER 0332 P
LK MISS RIO 2119
LT LONG DISTANCE 9001 PLD
RLB MS MAKER 922

This bull is consigned by Jena Smith. He is an attractive son of Pride. Real calving ease build to him and I think he could be used for heifers. He has been fed along with our bulls since weaning time and sells with the same guarantee.

CE	7.8
BW	-2.7
WW	51
YW	93
MILK	23
MCE	4.3
MTL	49
SC	0.7
TSI	239.13
CW	15
REA	0.63
FAT	0.037
MARB	0.18

R LAZY B RANCH

853 RLB MISTER 853K

Polled
Reg. #: M974638

BD: 3/10/22 BW: 86 AWW: 731 Ratio: 103
YW: _____ ADG: _____

SHSH HIGH CLASS 43D
HTA MISSLE 110H
HTA BRIDGET 704T

WINN MANS LANZA 610S
SHSH MADONNA 21U
M6 GRID MAKER 104 PET
HTA BRIDGET 577R

RBM FARGO Y111
RLB MS FARGO 853F
RLB MS MAC BLEND 146Y P

SPARROWS FARGO 811U
HC RHINESTONE 5100
JLS PERFORMER 766W PLD
RLB MS 869U

Similarly bred to the last 2 makes him a good choice to put on the trailer for spring delivery to your ranch. Keep these brothers together.

CE	7.0
BW	-0.6
WW	63
YW	123
MILK	21
MCE	6.7
MTL	53
SC	1.3
TSI	264.97
CW	28
REA	0.82
FAT	-0.005
MARB	0.02



R LAZY B RANCH

897 RLB MISSLE 897K

Polled
Reg. #: M974705

BD: 4/14/22 BW: 92 AWW: 685 Ratio: 96
YW: _____ ADG: _____

SHSH HIGH CLASS 43D
HTA MISSLE 110H
HTA BRIDGET 704T

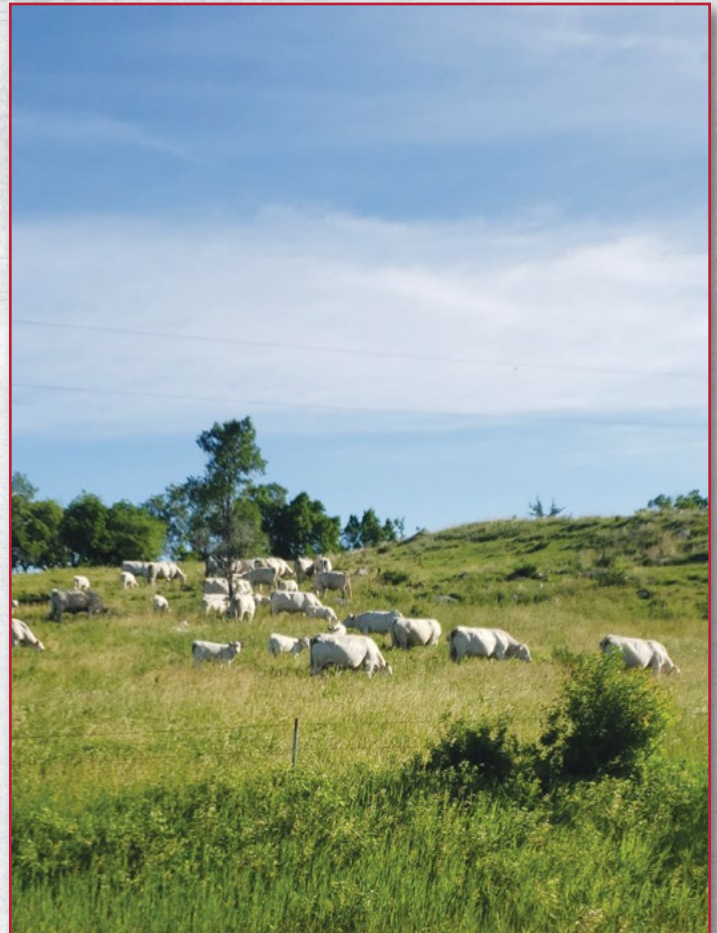
WINN MANS LANZA 610S
SHSH MADONNA 21U
M6 GRID MAKER 104 PET
HTA BRIDGET 577R

LT COMMISSIONER 5232 PLD
RLB MISS UNLIMITED 897F
RLB MS UNLIMITED 819U

LT LEDGER 0332 P
LT BALLETT 9219 POLLED
RC LIMITLESS 136 PLD
RLB MS SANDRA 620S

Another long-bodied Missile son.

CE	3.0
BW	0.7
WW	59
YW	113
MILK	16
MCE	3.8
MTL	46
SC	1.3
TSI	257.04
CW	24
REA	0.71
FAT	0.008
MARB	0.18



R LAZY B RANCH

902 RLB SIR ULTRA 902K

Polled
Reg. #: M974635

BD: 3/8/22 BW: 96 AWW: 790 Ratio: 111
YW: _____ ADG: _____

ELDER'S BLACKJACK 788B
WCR MASTER CHIEF 037 P
WCR MS PRIME CUT 852 P

GERRARD PASTOR 35Z
SVY STARSTRUCK 8X
WCR SIR PRIME CUT 637 ET P
WCR MS KINGSBURY 684 P

LT LANDMARK 5052 PLD
RLB MS ULTRA MARK 902G
RLB MS ULTRA 717E

LT RUSHMORE 8060 PLD
LT JENNY 3028 PLD
RBM FARGO Y111
RLB MISS ULTRA 217Z

CE	8.0
BW	-1.2
WW	70
YW	123
MILK	30
MCE	4.0
MTL	65
SC	0.8
TSI	263.18
CW	32
REA	0.98
FAT	0.005
MARB	0.06

I think he is my pick of the Master Chief offspring. Super thick, very eye appealing. Performance that won't quit. Well bred pedigree, Purebred quality. Great choice.



R LAZY B RANCH

907 RLB MASTER PLAN 907K

Polled
Reg. #: M974704

BD: 4/14/22 BW: 84 AWW: 757 Ratio: 107
YW: _____ ADG: _____

ELDER'S BLACKJACK 788B
WCR MASTER CHIEF 037 P
WCR MS PRIME CUT 852 P

GERRARD PASTOR 35Z
SVY STARSTRUCK 8X
WCR SIR PRIME CUT 637 ET P
WCR MS KINGSBURY 684 P

RLB SIR KANSAS 003E
RLB MS ABBY 907G
RLB MISS ABBY 716E

LT PATRIOT 4004 PLD
RLB MISS KANSAS 003
LT LANDMARK 5052 PLD
RLB MISS ABBY 503C PLD TW

CE	10.3
BW	-2.7
WW	69
YW	128
MILK	28
MCE	7.8
MTL	63
SC	1.0
TSI	272.53
CW	32
REA	0.87
FAT	0.016
MARB	0.14

Very closely related to the previous bull. Deep, thick, and good numbers.

R LAZY B RANCH

9117 RLB PRIZE FIGHTER 9117K

Polled
Reg. #: M974682

BD: 3/28/22 BW: 90 AWW: 719 Ratio: 108
YW: _____ ADG: _____

HTA ASTROID 603D
HTA UNDEFEATED 8115F
HTA SARA 447B

HTA BRAVIA 855U
HTA BRIDGET 704T
C2 ZEPLIN 45Z
HTA SARA 9107W

LT COMMISSIONER 5232 PLD
RLB MISS MARIA 9117G
RLB MS MARIA 339A

LT LEDGER 0332 P
LT BALLETT 9219 POLLED
RBM FARGO Y111
RLB MS MARIA 924

CE	5.4
BW	0.5
WW	68
YW	122
MILK	22
MCE	6.4
MTL	56
SC	1.4
TSI	261.26
CW	32
REA	0.80
FAT	0.018
MARB	0.12

An Undeclared with plenty of growth.



R LAZY B RANCH

918 RLB SIR CHIEF 918K

Polled
Reg. #: M974634

BD: 3/5/22 BW: 80 AWW: 642 Ratio: 90
YW: _____ ADG: _____

ELDER'S BLACKJACK 788B
WCR MASTER CHIEF 037 P
WCR MS PRIME CUT 852 P

GERRARD PASTOR 35Z
SVY STARSTRUCK 8X
WCR SIR PRIME CUT 637 ET P
WCR MS KINGSBURY 684 P

RBM FARGO Y111
RLB MISS FARGO 918G
RLB MISS RIOT 607D

SPARROWS FARGO 811U
HC RHINESTONE 5100
LT PATRIOT 4004 PLD
RLB MISS TIMER 314A

CE	10.2
BW	-2.3
WW	59
YW	116
MILK	24
MCE	9.5
MTL	53
SC	1.1
TSI	260.03
CW	39
REA	0.93
FAT	0.020
MARB	0.07

You will like this Master Chief too. They are all boldly sprung and big bodied cattle.



R LAZY B RANCH

927 RLB HIGH STAKES 927K

Polled
Reg. #: M974637

BD: 3/10/22 BW: 80 AWW: 712 Ratio: 100
YW: _____ ADG: _____

LT JOURNEY 5208 PLD
LT RANSOM 8644
LT SHEILA 337 PLD

LT QUEST 2203 PLD
LT MOLLY 3011 PLD
LT BLUE VALUE 7903 ET
LT MISS BREEZY 524

RBM FARGO Y111
RLB MISS MARIA 927G
RLB MISS MARIA 620D

SPARROWS FARGO 811U
HC RHINESTONE 5100
LT PATRIOT 4004 PLD
RLB MS MARIA 339A

CE	8.2
BW	-1.0
WW	62
YW	120
MILK	29
MCE	5.7
MTL	60
SC	1.4
TSI	264.83
CW	28
REA	0.77
FAT	0.009
MARB	0.13

Ransom at his best. Low BW, maternal pedigree. Keep every daughter. This bull is extra long and very attractive.

RLAZY B RANCH
934 RLB SNOW MASTER 934K Polled
 Reg. #: M974700

BD: 4/10/22 **BW:** 100 **AWW:** 826 **Ratio:** 116
YW: _____ **ADG:** _____

ELDER'S BLACKJACK 788B
WCR MASTER CHIEF 037 P
 WCR MS PRIME CUT 852 P

GERRARD PASTOR 35Z
 SVY STARSTRUCK 8X
 WCR SIR PRIME CUT 637 ET P
 WCR MS KINGSBURY 684 P

LT PATRIOT 4004 PLD
RLB MISS SNOWY 934G
 RLB SNOW WHITE 570C PLD

LT LEDGER 0332 P
 LK MISS RIO 2119
 RBM NO DOUBT 234
 RLB MS SNOWY 626S TW

Very correct and well structured. Unmatched performance. High indexing with a strong, wide topline and a deep flank.

CE	2.4
BW	1.0
VW	80
YW	142
MILK	30
MCE	4.7
MTL	70
SC	1.0
TSI	279.89
CW	39
REA	0.87
FAT	0.021
MARB	0.16



RLAZY B RANCH
950 RLB BIG MAC 950K ET Polled
 Reg. #: EM977808

BD: 3/27/22 **BW:** 90 **AWW:** 755 **Ratio:** 100
YW: _____ **ADG:** _____

TCR MAC A40
TCR MAC 9F
 MISS TCR COWGIRL D37

TCR MAC 14T
 MISS TCR CAPRICE W36
 TCR COWBOY V3
 MISS TCR CAPRICE X52

LT BLUE VALUE 7903 ET
RLB MISS BELLE 406B P
 RLB MS CONNIE 245Z

LT BLUEGRASS 4017 P
 LT UNLIMITED MAID 7184 P
 KEYS MAGNUM 44U
 RLB MS CONVERSE 514

An extra long MAC son with a wide top and calving ease front. ET son of our 406 cow.

CE	5.6
BW	-0.6
VW	63
YW	115
MILK	25
MCE	7.3
MTL	56
SC	0.8
TSI	259.54
CW	28
REA	0.86
FAT	-0.010
MARB	0.15

RLAZY B RANCH
958 RLB MASTER KEY 958K Polled
 Reg. #: M974665

BD: 3/20/22 **BW:** 86 **AWW:** 743 **Ratio:** 105
YW: _____ **ADG:** _____

ELDER'S BLACKJACK 788B
WCR MASTER CHIEF 037 P
 WCR MS PRIME CUT 852 P

GERRARD PASTOR 35Z
 SVY STARSTRUCK 8X
 WCR SIR PRIME CUT 637 ET P
 WCR MS KINGSBURY 684 P

PLEASANTDAWN PINNACLE 908E
RLB MISSQUEEN 958G
 RLB MISS QUEEN 621D

PLEASANT DAWN CHISUM 216A
 PLEASANTDAWN TEASER 708Y
 LT PATRIOT 4004 PLD
 RLB QUEEN SHEBA 363A

Wide and deep Master Chief with impressive EPDs.

CE	5.9
BW	-0.9
VW	70
YW	134
MILK	24
MCE	8.0
MTL	59
SC	0.9
TSI	277.21
CW	38
REA	0.91
FAT	0.007
MARB	0.11



RLAZY B RANCH
964 RLB POLLED CHIEF 964K Polled
 Reg. #: M974694

BD: 4/5/22 **BW:** 90 **AWW:** 746 **Ratio:** 105
YW: _____ **ADG:** _____

ELDER'S BLACKJACK 788B
WCR MASTER CHIEF 037 P
 WCR MS PRIME CUT 852 P

GERRARD PASTOR 35Z
 SVY STARSTRUCK 8X
 WCR SIR PRIME CUT 637 ET P
 WCR MS KINGSBURY 684 P

PLEASANTDAWN PINNACLE 908E
RLB MISS PINNACLE 964G
 RLB BLUE MISS 506C PLD

PLEASANT DAWN CHISUM 216A
 PLEASANTDAWN TEASER 708Y
 LT BLUE RAY 3316 TW PLD
 RLB MISS TIMER 314A

Super clean fronted and same deep body and flank.

CE	5.0
BW	0.1
VW	70
YW	122
MILK	27
MCE	8.3
MTL	62
SC	0.8
TSI	262.05
CW	36
REA	1.00
FAT	0.002
MARB	0.11

RLAZY B RANCH
979 RLB NEW CHIEF 979K Polled
 Reg. #: M974681

BD: 3/28/22 **BW:** 90 **AWW:** 755 **Ratio:** 106
YW: _____ **ADG:** _____

ELDER'S BLACKJACK 788B
WCR MASTER CHIEF 037 P
 WCR MS PRIME CUT 852 P

GERRARD PASTOR 35Z
 SVY STARSTRUCK 8X
 WCR SIR PRIME CUT 637 ET P
 WCR MS KINGSBURY 684 P

EC MAJOR IMPACT 107 PLD
RLB MS KUDO 979G
 RLB MISS KUDO 313A

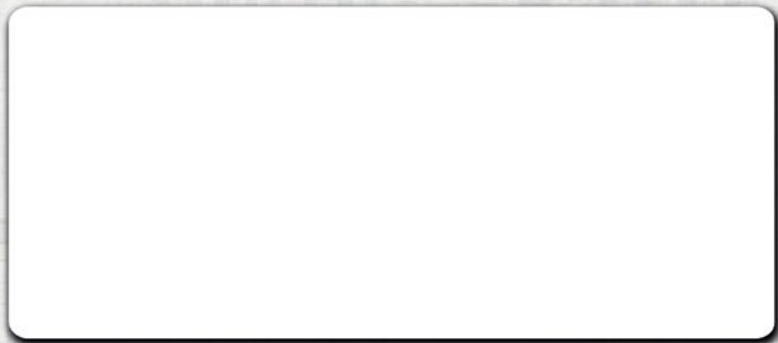
EC SILVER DISTANCE 740 PLD
 EC DYNASTY 107 PLD
 LT LEDGER 0332 P
 RLB MISS KUDO 152Y PLD

Almost identical to the other Master Chief sons. They are all good.

CE	5.2
BW	-0.4
VW	66
YW	118
MILK	30
MCE	7.9
MTL	62
SC	1.1
TSI	260.01
CW	30
REA	0.95
FAT	0.008
MARB	0.11



Robert Birklid
5851 122nd Ave SE
Nome, ND 58062
701-924-8876



Lot 678



Lot 068



Lot 927



Lot 902

ANNUAL PRODUCTION SALE
FRIDAY, FEBRUARY 17, 2023
1 PM CT || HUB CITY LIVESTOCK, ABERDEEN, SD

75 YEARLING
CHAROLAIS BULLS SELL
SATISFACTION GUARANTEED

CALVING EASE || GROWTH || MILK || CARCASS VALUE